

Out in Left Field

JUNE 2010

this issue

HOMERUN 7.0
CTO MEMO
TRAINING VIDEOS
HOMERUN DEMO
HOME RUN SPECIAL

SEVENTH INNING STRETCH for Centerfield Technology's—HomeRun 7.0 release

Earlier this spring we rolled out the latest version of our HomeRun Suite. This updated version of our autonomic toolset is targeted at DB2 for i5/OS. Based on the feedback and suggestions of our customers, we have continued to improve our autonomic database administrator (AutoDBA) to make it even better. In addition, we've leveraged new operating system enhancements such as .NET based state-of-the-art reporting. Homerun 7.0 offers an innovative way to view key performance metrics.

We hope you enjoy this issue of "Out In Left Field", which outlines the enhancements of this recent upgrade. Take a 7th-Inning stretch, let's zoom in on the playing field and take a closer look at this latest release.

Our History:

Founded in 1997, Centerfield Technology is a software developer and IBM Business Partner based in Rochester, Minnesota. We work closely with IBM Rochester Labs, just down the street, to provide tools and services that help companies and ISVs more effectively utilize and manage their AS/400, iSeries and System i.

Our goal is to help clients improve SQL performance, optimize DDS logical files & SQL indices, audit data access, control resources used by queries, and secure data.

We are excited about the availability of our latest release:

HomeRun Suite—Version 7.0

CTO MEMO: mark holm



Welcome to the June edition of Centerfield Technology's newsletter.

We are excited to have a chance to talk more about our new product release: Homerun 7.0. After listening to our customers and working hard to incorporate improvements, I think you will be happy to hear about the latest release of Centerfield's flagship product.

We're also excited to announce our support page now has video tips and techniques. Whether you are an existing customer that needs a refresher on the product or just trying the product for the first time you now have a place to go 7x24 to get your questions answered without reading manuals.

I'd also like to remind all of our readers that if you prefer consulting services over software, Centerfield has access to the some of the world's leading experts in DB2. We are here to assist you with your most difficult performance and design challenges no matter what kind of help you need.

Enjoy our newsletter and have a great summer!

Mark Holm

CTO Centerfield Technology



HomeRun personalized demo

Q: How can I see close up what HomeRun can do for my system's environment?

Contact us for a personalized demo between our tech team and your system administrators. We'll look at the features of our HomeRun Suite. We will work with you to find areas where our product can increase productivity, tighten up security, improve end-user response time, and manage changes to your applications and database. Following the demo we will provide you with a trial key that will allow you full access to our product for a limited amount of time. When you are ready we can proceed with getting you a permanent installation of our suite. We have the tools to implement a tuning methodology to get the most out of your hardware, software and people. We look forward to working with you! E-mail: support@centerfieldtechnology.com

HomeRun 7.0

HomeRun Suite Product Review



HomeRun is a suite of database tools that address SQL performance monitoring; tuning; resource consumption and usage tracking; as well as network security and auditing, all from a IBM's DB2 for i5/OS perspective.

- INDEX provides automated identification of indexes without the need for a high level of expertise required with traditional methods.
- ANALYSIS gives database administrators and performance analysts a powerful and intuitive tool to gain knowledge and understanding of database and SQL activity for their mission-critical applications.
- MONITOR allows an operator to identify potential problems real-time and take action to protect critical applications. Or if you're running OneWorld on a System i with Citrix, you can then choose Monitor for OneWorld and view OneWorld jobs and their associated details. Important Job Metrics can be viewed graphically as well, to help monitor and pinpoint particular issues.
- RESOURCES lets IT control the use of query tools (Query/400, Open Query File, ODBC apps, Start and Run SQL commands) by allowing them to first track query usage and then define straightforward rules that are automatically enforced to govern the use of system resources by tool, by user, and by time of day.
- SECURITY enables security officers to protect critical application data from accidental or malicious damage without the risks associated with blindly applying traditional IBM System i security.

**HOMERUN 7.0
enhancement brings
DB2 best practices to all
IBM System i customers.**

SO...What's new??

AutoDBA gets a facelift making it more user-friendly. Users can now filter, order, and group advice much easier within powerful data grids. Reporting has been added to AutoDBA to give users another way to see and present advice. Advice can now more easily be exported from AutoDBA to other formats such as Word, Excel, and PDF.

With HomeRun Version 7.0, IBM System i shops get:

- New graphical interface for the AutoDBA portion of HomeRun
- New reporting in AutoDBA
- Improved prioritization of index recommendations to ensure they are getting the most value from every new index.
- Expert advice generated by AutoDBA within a few hours of install using the most active files on the system to analyze and recommend advice.
- A new policy permission and filter which allows indexes that have been created through AutoDBA to be more aggressively removed if they are not being used.

For a more detailed look at the specific enhancements over previous versions please reference our website:

<http://www.centerfieldtechnology.com/pdf/WhatsNew.pdf>



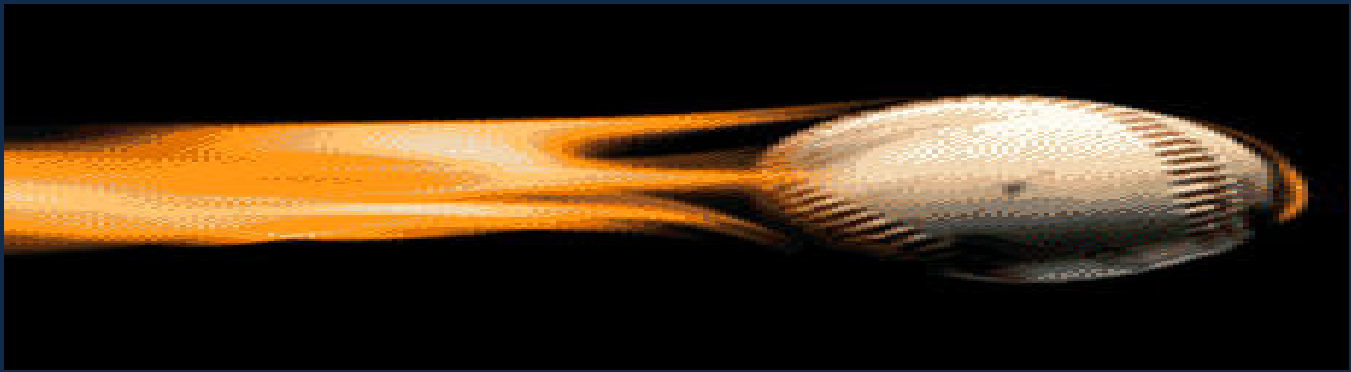
Look at HomeRun 7.0

Advice Benefit	Times Advised	Advice	Library	File	Member	File Type	Action Performed	Last Advised
High	14	Recreate keyed LP as it shares access path of another index	QHPGDATA	QAPK00BL	Q15400002	Logical	Advice only, external action required	2010-06-04 15:01
High	30	Recreate keyed LP as it shares access path of another index	QHPGDATA	QAPM0VSL	Q15400002	Logical	Advice only, external action required	2010-06-04 15:01
High	12	Delete redundant index as it has same leading keys as another index	XCENTSR070	XCAOVCE06	XCADVCE06	Logical	Advice only, external action required	2010-06-07 02:11
High	24	Create index to improve performance	XCENTSR070	XCAOVCE06	XCADVCE06	Physical	no	2010-06-07 02:11
High	24	Create index to improve performance	XCENTSR070	XCAOVCE06	XCADVCE06	Physical	no	2010-06-07 02:11
High	24	Create index to improve performance	XCENTSR070	XCAOVCE06	XCADVCE06	Physical	no	2010-06-07 02:11
High	13	Run RGZPFM on the PF based on this key file for clustered index benefits	XCENTSR070	XCIIXADV	XICDADV	Physical	Advice only, external action required	2010-06-07 02:11
High	39	Create index to improve performance	XCENTSR070	XCIIXADV	XICDADV	Physical	no	2010-06-07 02:11
High	39	Create index to improve performance	XCENTSR070	XCIIXADV	XICDADV	Physical	no	2010-06-07 02:11
High	39	Create index to improve performance	XCENTSR070	XCIIXADV	XICDADV	Physical	no	2010-06-07 02:11
High	28	Create index to improve performance	XCENTSR070	XCIIXADV	XICDADV	Physical	no	2010-06-07 02:11
High	28	Create index to improve performance	XCENTSR070	XCIIXADV	XICDADV	Physical	no	2010-06-07 02:11
High	28	Create index to improve performance	XCENTSR070	XCIIXADV	XICDADV	Physical	no	2010-06-07 02:11
High	28	Create index to improve performance	XCENTSR070	XCIIXADV	XICDADV	Physical	no	2010-06-07 02:11
High	13	Create index to improve performance	XCENTSR070	XCIIXADV	XICDADV	Physical	no	2010-06-07 02:11
High	13	Create index to improve performance	XCENTSR070	XCIIXADV	XICDADV	Physical	no	2010-06-07 02:11
High	3	Recreate keyed file with larger logical page size	QSYS	QADBPICL	QDNBPICL	Logical	Advice only, external action required	2010-06-03 15:12
High	3	Run RGZPFM on the PF based on this key file for clustered index benefits	QSYS	QADBPICL	QDNBPICL	Physical	Advice only, external action required	2010-06-03 15:12
High	11	Recreate keyed file with larger logical page size	QSYS	QADLDEP	QDNLDEP	Logical	Advice only, external action required	2010-06-07 02:11
High	11	Run RGZPFM on the PF based on this key file for clustered index benefits	QSYS	QADLDEP	QDNLDEP	Physical	Advice only, external action required	2010-06-07 02:11
High	11	Create index to improve performance	QSYS	QADNREF	QDNREF	Physical	no	2010-06-07 02:11
High	11	Create index to improve performance	QSYS	QADNREF	QDNREF	Physical	no	2010-06-07 02:11
High	11	Create index to improve performance	QSYS	QADNREF	QDNREF	Physical	no	2010-06-07 02:11
High	11	Create index to improve performance	QSYS	QADNREF	QDNREF	Physical	no	2010-06-07 02:11
High	12	Recreate keyed LP as it shares access path of another index	QHPGDATA	QAPK00BL	Q153144642	Logical	Advice only, external action required	2010-06-04 15:01
High	6	Recreate keyed LP as it shares access path of another index	QHPGDATA	QAPK00BL	Q154002050	Logical	Advice only, external action required	2010-06-04 15:01
Medium	3	Change unused keyed PF access path maintenance to delayed	BUILD70	XCTEMPLACT	XCTEMPLACT	Physical	no	2010-06-04 15:01
Medium	2	Change unused keyed PF access path maintenance to delayed	BUILD70	XCTEMPLAUD	XCTEMPLAUD	Physical	no	2010-06-04 15:01



Take a closer look at our HomeRun Suite—then explore your options:

- Check out our website: <http://www.centerfieldtechnology.com/homerun.asp>
- Request a personalized demo of HomeRun—support@centerfieldtechnology.com
- Request a trial license key—trial@centerfieldtechnology.com
- Call us to discuss your specific system needs 507-287-8119 or 888.387.8119



Centerfield Technology Services:

DB₂ CONSULTING: Having database performance issues? Let us help you with either our onsite or remote consulting engagement. Our consulting practice focuses on application and database performance tuning, database design and implementation, work management configuration, SQL performance tips/tricks, and remote database access to the iSeries. Because we have partnered with IBM Lab Services, Centerfield can provide a wide variety of services and development resources for the System i. Call or send us an e-mail today to see if we can help you with your latest challenge.

On Line Informational & Training Videos:



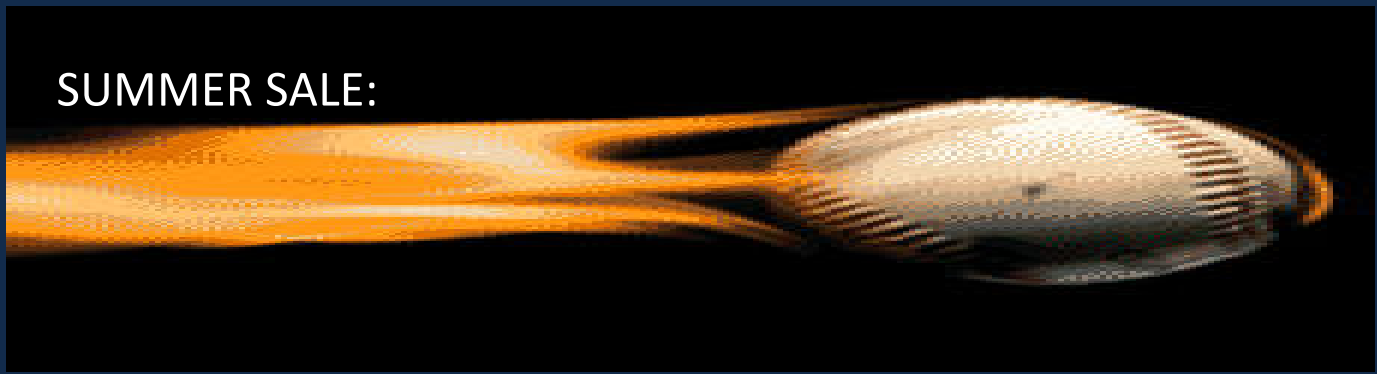
Need a refresher? Check out our all new online videos for general FAQs and best practices for our HomeRun product. All videos are under 5 minutes long and take you through our most asked questions and general tips and pointers to help you get the most out of our product.

Informational Videos— check them out:

<http://www.centerfieldtechnology.com/Videos.asp>



SUMMER SALE:



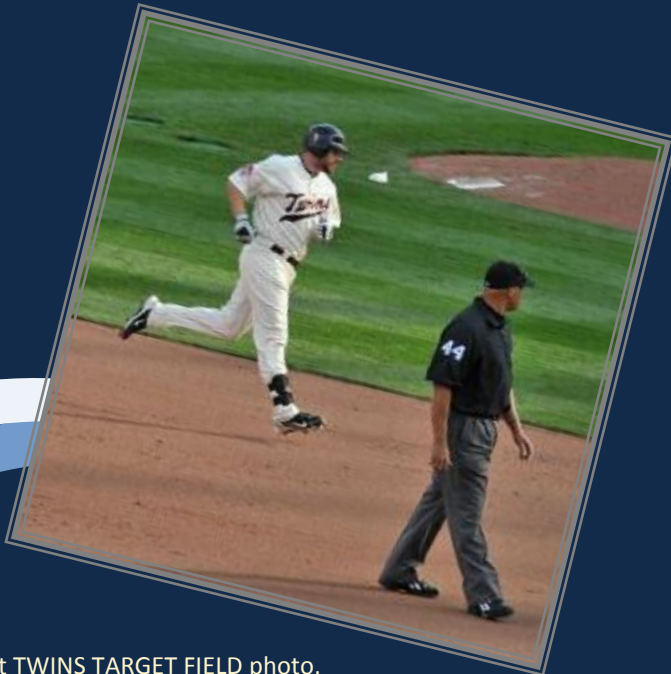
HomeRun Suite Version 7.0 Summer 2010 Offer:
15% OFF current listed price

Offer good on purchase of entire HomeRun suite on one LPAR or SYSTEM
purchased directly through Centerfield Technology by 7/31/2010

CONTACT US TODAY!

sales@centerfieldtechnology.com

Hit a HomeRun and touch all the bases with
Centerfield Technology's
HomeRun Suite—Version 7.0



Centerfield Technology, Inc.

3131 Superior Drive NW—Ste C
Rochester, MN 55901

507.287.8119 phone
888.387.8119 toll free

7th Inning Stretch at TWINS TARGET FIELD photo,
home run photo, and pointing towards home
photo by: Randy Carey of <http://careytech.com/>

www.centerfieldtechnology.com